

SB-2124-GIS3

iSCSI-SAS RAID Subsystem



Unparalleled Performance

- ◆ Front-end 4 x 1Gb iSCSI
- ◆ Supports 802.3ad port trunking, Link Aggregation Control Protocol (LACP)
- ◆ High data bandwidth of system architecture by powerful 64-bit RAID processor

Unsurpassed Data Availability

- ◆ RAID 6 capability provides the highest level of data protection
- ◆ Supports snapshot-on-the-box w/o relying on host software
- ◆ Supports Microsoft Windows Volume Shadow Copy Services (VSS)

Exceptional Manageability Menu-driven front panel display

- ◆ Management GUI via serial console, SSH, telnet, Web and secure Web(HTTPS)
- ◆ Event notification via Email and SNMP trap
- ◆ Menu-driven front panel display

Features

- ▶ Front-end 4 x 1Gb ports support independent access, fail-over or load-balancing (802.3ad port trunking, LACP)
- ▶ Supports iSCSI jumbo frame
- ▶ Supports Microsoft Multipath I/O (MPIO)
- ▶ Supports RAID levels 0, 1, 0+1, 3, 5, 6, 10, 30, 50, 60 and JBOD
- ▶ Local N-way mirror: Extension to RAID 1 level, N copies of the disk
- ▶ Global and dedicated hot spare disks
- ▶ Write-through or write-back cache policy for different application usage
- ▶ Dedicated or shared cache allocation for volume usage
- ▶ Supports greater than 2TB per volume set (64-bit LBA support)
- ▶ Supports manual or scheduling volume snapshot (up to 32 snapshot)
- ▶ Snapshot rollback mechanism
- ▶ Online volume migration with no system down-time
- ▶ Online volume expansion
- ▶ Instant RAID volume availability and background initialization
- ▶ Supports S.M.A.R.T, NCQ and OOB Staggered Spin-up capable drives



Proware Technology Corp.

Tel:886-2-2914-8001(Rep.) Fax:886-2-2914-7975
http://www.proware.com.tw E-mail:info@proware.com.tw



Series Technical Specifications

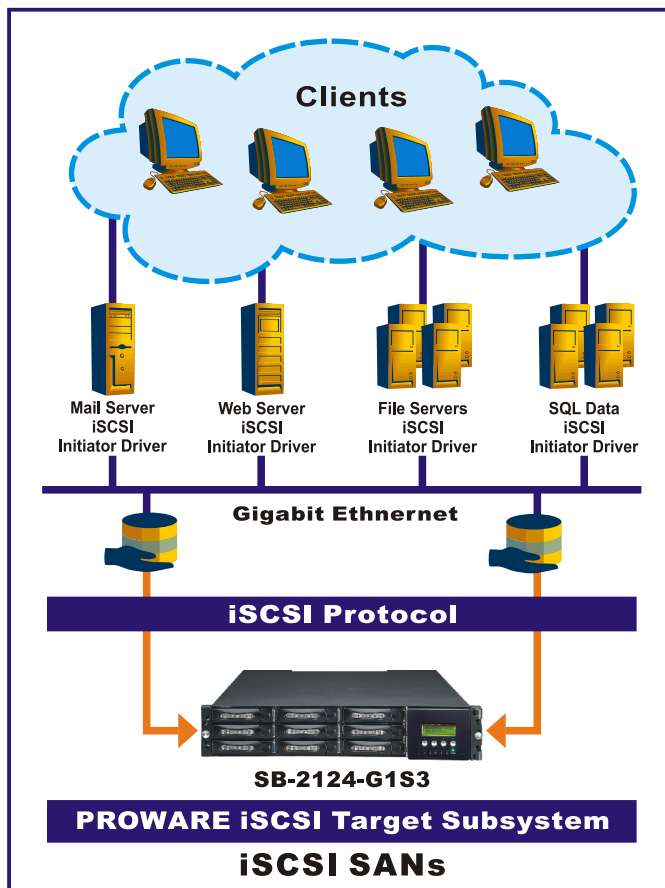


Model Number: **SB-2124-G1S3**

Form Factor: 2U 19-inch rackmount chassis	Online Volume sets expansion
RAID processor: Intel IOP342 64-bit	Configurable stripe size
RAID Level: 0, 1, 0+1, 3, 5, 6, 10, 30, 50, 60 and JBOD	Instant RAID volume availability and background initialization support
N-way mirror (N copies of the disk)	Supports over 2TB per volume
Cache memory: 512MB ~ 2GB DDRII	Online consistency check
No. of channels (host+drive): 4 + 12	Bad block auto-remapping
Host bus interface: 1Gb/s Ethernet	S.M.A.R.T. support
Drive bus interface: 3Gb/s SAS / SATA II	New disk insertion / removal detection
Hot-swap drive trays: Twelve (12) 1-inch trays	Auto volume rebuild
Host access control: Read-Write & Read-Only	Array roaming
Supports CHAP authentication	Audible alarm
802.3ad port trunking, LACP support	Password protection
Jumbo frame support	UPS connection
Maximum logical volume: up to 1024	Hot-swap power supplies: Two (2) 350W power supplies w/PFC
Maximum host connection: up to 32	Cooling fans: 2
Maximum host clustering: up to 16 for one logical volume	Battery backup(Optional)
Manual/scheduling volume snapshot: up to 32	Power requirements: AC 90V ~ 264V full range 8A ~ 4A, 47Hz ~ 63Hz
Snapshot rollback mechanism support	Environmental
Supports Microsoft Multipath I/O (MPIO)	Relative Humidity: 10% ~ 85% Non-condensing
Supports Microsoft Windows Volume Shadow Copy Services (VSS)	Operating Temp: 10°C ~ 40°C (50°F ~ 104°F)
Global/dedicated cache configurable by volume	Physical Dimensions: 88(H) x 482(W) x 650(D)mm
Global and dedicated hot spare disks	Weight: 13.5 kgs
Online Volume migration	

Specification are subject to change without notice.

All company and product names are trademarks of their respective owners.



Advantages of iSCSI

- ▶ Familiar network technology and management
 - Reduces training and staff costs.
- ▶ Proven transport infrastructure
 - Increases reliability.
- ▶ Transition from 1Gigabit Ethernet to 10 Gigabit Ethernet and Beyond
 - Protects investment with simplified performance upgrades Scalability over long distances.
 - Enables remote data replication and disaster recovery.
- ▶ Brings Ethernet economics to storage
 - Enables lower total cost of ownership(TCO).
- ▶ **Consolidation** : iSCSI delivers seamless expandability, automatic load balancing, automatic storage provision, disaster recovery etc..
- ▶ **Virtualization** :
 - Scalable, highly available pool of storage.
 - Storage allocation and resizing on-demand.
 - Centralized management with remote access.
 - Security that protects logical volumes from unauthorized access.
 - Snapshot and replication.
 - Volume mirroring.
 - Multi-Path host access.